

LibreOffice development by the Hungarian Free Software Competence Center

LibreOffice Conference 2013
gabor.kelemen@kim.gov.hu

This work is licensed under a
[Creative Commons Attribution-ShareAlike 3.0 Unported License](https://creativecommons.org/licenses/by-sa/3.0/).

Who are we?

- Ministry of Public Administration and Justice
- Pilot project (2012 - 2013)
- 6 people: programmer, engineer, teacher, translator

Motivation

- Economic benefits
- Increasing interoperability
- Document format independence by reduction of vendor lock-in
- Improving service quality

What do we usually do?

- Localization
- Training (users, trainers, administrators)
- Documentation
- LibreOffice development/bug fixing (spellchecking)
 - LibreLogo
 - Centralized management solution
- Enterprise Free Software management tools
- Pilot projects (large volume LO migration > 10k)

LibreOffice in the Hungarian Public Administration

- Budapest Metropolitan Court
- Municipalities: Szeged, Miskolc, Budapest 18th district

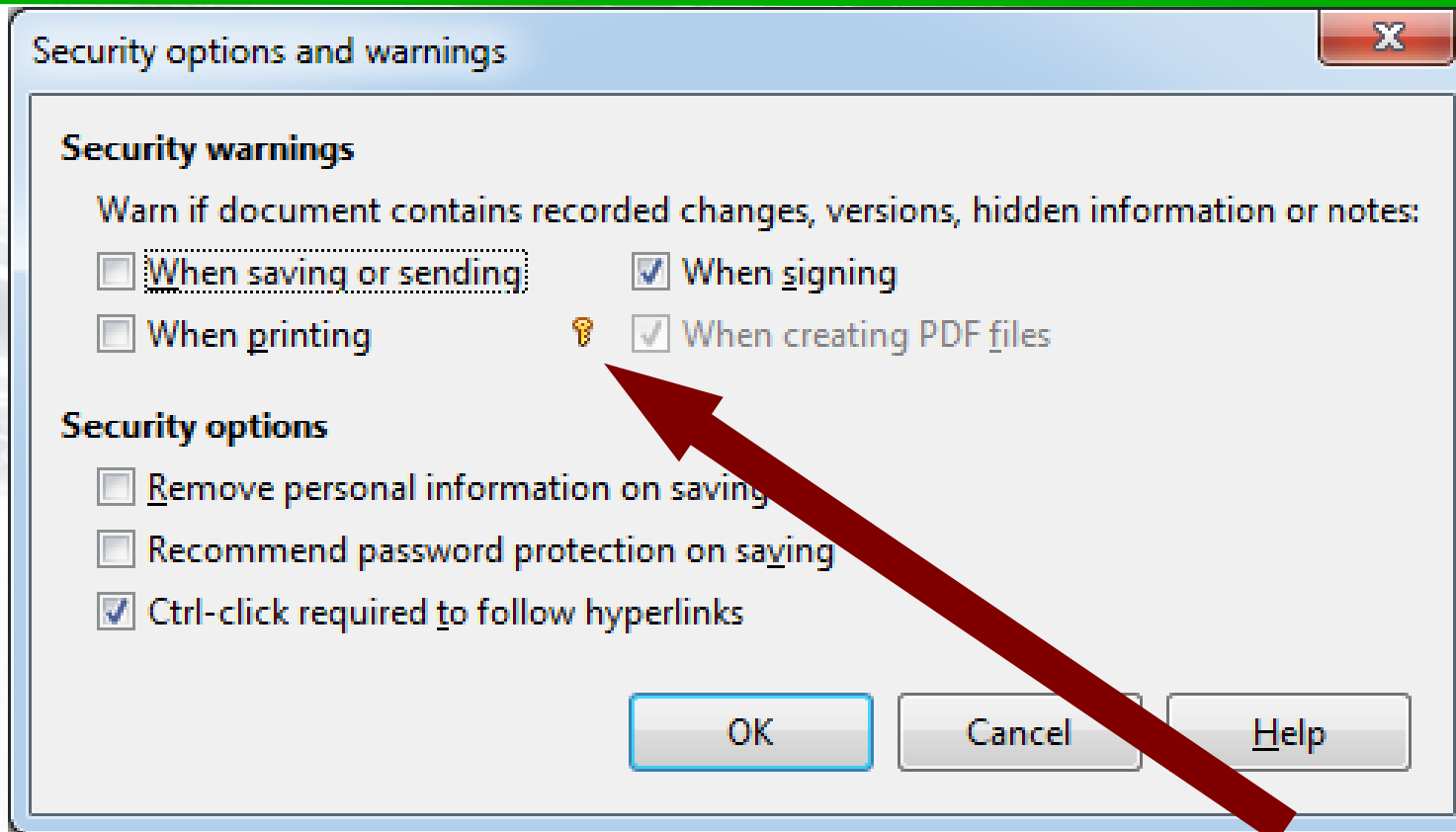
What's missing for us?

- Centralized settings/update management (missing)
- Centralized form/template management
- Up to date documentation
 - User's guide
 - Training materials

Centralized management solution for LibreOffice

- Development project
- Features:
 - Platform-independent
 - LO to take settings from a centrally manageable file/DB
 - Lockdown: user should not override central settings
 - Windows: registry as backend
 - Linux/Mac: already existed
- Goal: merge into main LO codebase by 4.2 (done)

Result (Thanks Andras!)



Hey, we set and locked a LibreOffice setting via Group Policy, the de-facto standard of central configuration management on Windows environment!

Centralized form management: WollMux

- Developed by the Munich Municipality
- Office suite part of LiMux
- Licence: EUPL
- Workflow was optimized

Features of WollMux

- Platform independent Java extension for OOo/LO
- Centrally store and manage templates
- Hierarchical template management
- Office form migration tool
- Form designer and form filling function
- WollMuxBar for quick access to main functions

Why do we want to use it?

- Solves our problems (hopefully)
 - Already “sold” to certain organizations: pilot projects

What did we do to use it?

- Localization to Hungarian
 - UI translation
 - Translated: Form manager handbook, wiki
 - User and admin guide based on the wiki
 - Example configuration – to be deployed

Side note: Wiki localization

- Conversion to po files and back
- Translate-toolkit: conversion bugs were fixed
- Maintenance: Pootle

Problem

”Is that even used outside
Germany”?
– E. Rathke

Internationalization of the software

- I18N framework: custom → standard
- Default language in UI -> English
- Web-based translation (Pootle)

Questions?

